

DATA SHEET

PHW 20 3 m 5P

394-003872-00000

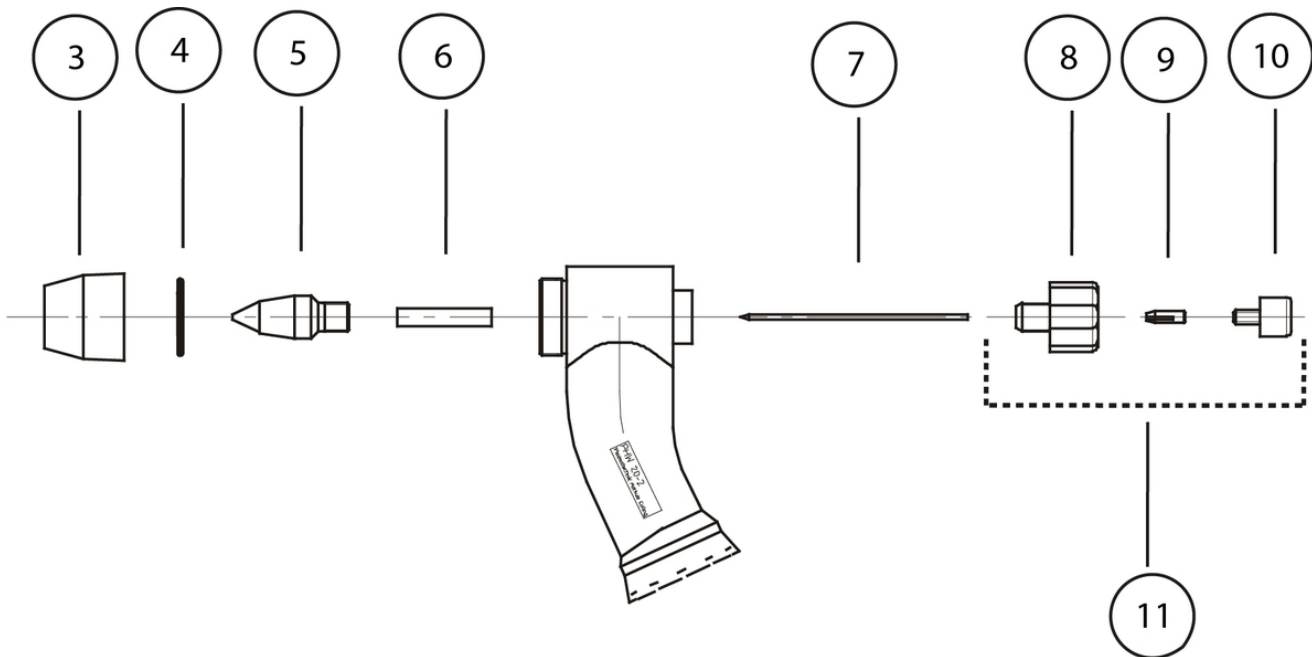


- Very small, water-cooled, powerful micro-plasma welding torch
- Suitable for Microplasma 25
- Plasma welding of foils, wires and filters made from high-alloy steels and nickel, copper and titanium alloys between 0.05 mm and 1 mm thick
- Conceived for precise welding of the finest wires and foils where the arc is extremely stable even with minimal welding currents
- **Consumables, dental:**
 - For welding small wires for braces, inlays, dentures, etc.
 - For small currents up to 15 A
 - Projecting plasma nozzle
- **Standard consumables** are suitable for currents between 15 and 25 amperes
- Always read the information in the operating instructions of the relevant welding torch and welding machine before carrying out any welding.

Duty cycle DC-	20 A / 100 %
Connection poles	Tuchel, 5-pole
Connection	Tuchel, 5-pole
Hose package length	3 m
Nozzle Ø	0.5 mm - 1.2 mm
Test mark	CE

DATA SHEET

Consumables



Item	Item no.	Designation
3	394-001116-00000	Ø 9 mm. Gas nozzle
3	394-001117-00000	Ø 10 mm. Gas nozzle
3	394-002698-00000	Ø 11 mm. Gas nozzle
4	094-016466-00000	1 x 15 mm. O-ring
5	394-001115-00000	0,8 x 24,2 mm. Plasma nozzle
5	394-001114-00000	0,5 x 24,2 mm. Plasma nozzle
5	394-000034-00000	1,0 x 24,2 mm. Plasma nozzle
5	094-020283-00000	1,2 x 24,2 mm. Plasma nozzle
5	394-002697-00000	0,8 x 29,2 mm. Plasma nozzle, dental
6	394-001118-00000	CP PHW 20. Centring piece
7	094-019147-00000	WL 10 1 x 47 mm. Tungsten electrode
7	394-002695-00000	1 x 52 mm. Tungsten electrode, dental
-	394-002694-00000	EH PHW 20. Electrode holder
-	394-002238-00000	C PHW 20. Collet chuck
-	394-002693-00000	CP PHW 20. Clamping screw
-	394-002692-00000	BC PHW 20. Complete back cap, consisting of clamping screw, collet chuck and electrode holder
-	394-001119-00000	EAG PHW 20. Electrode setting gauge
-	394-002701-00000	EAG PHW 20 Dental. Electrode setting gauge, dental