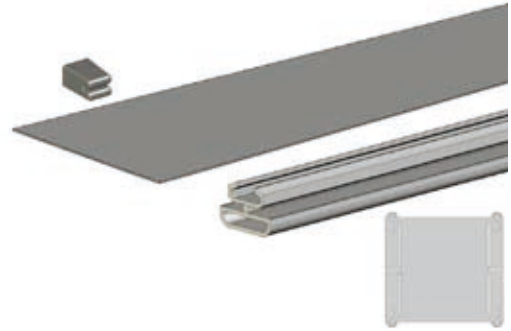


ROOF PANEL SET (EXTENSION)

ROOF PANEL SET (EXTENSION) FOR FLEXHOOD

Roof panel set, being part of a modular extraction hood. It consists of roof panels (top and bottom), H-profiles and distance holders, to be inserted in the *main frame* profiles. The roof panel set (extension) is used in combination with the *roof panel set (basic)*. The *roof panel set (basic)* can be extended by max. 5 roof panel sets (extension).

The roof panel set (extension) is available in three different lengths.



SPECIFICATIONS

■ Physical dimensions and properties	
Dimensions	refer to Table 1 (Scope of supply)
Material:	<ul style="list-style-type: none"> • roof panel (top and bottom) • H-profile • distance holder • vertical spacer
	<ul style="list-style-type: none"> • resin filled aluminium sandwich plate • aluminium • talc-filled polypropylene • zinc-plated steel
Colour:	<ul style="list-style-type: none"> • roof panel (top and bottom) • H-profile • distance holder • vertical spacer
	<ul style="list-style-type: none"> • grey • anodized • grey RAL 7024 • natural
Weight (net)	refer to Table 1
■ Where used	
FlexHood	modular extraction hood
■ Scope of supply	
Refer to Table 1	
■ Order information	
Article number	refer to Table 1
Number/package	
• 1x2	<ul style="list-style-type: none"> • set of 1x roof panel top + 1x roof panel bottom + fixing material
• 3x2	<ul style="list-style-type: none"> • set of 3x roof panel top + 3x roof panel bottom + fixing material
■ Shipping data	
Gross weight	refer to Table 1
Packing dimensions	refer to Table 1
Harmonized Tariff Code	8421.9900.99
Country of origin	the Netherlands

Table 1: Logistic details

Type	Roof panel set (extension) 1,0 m (1x2 pcs)		Roof panel set (extension) 1,5 m (1x2 pcs)		Roof panel set (extension) 2,0 m (1x2 pcs)	
Article number	9750401010		9750401020		9750401030	
Scope of supply:						
• roof panel top	1x	997 x 497 x 3 mm	1x	1497 x 497 x 3 mm	1x	1997 x 497 x 3 mm
• roof panel bottom	1x	957 x 497 x 3 mm	1x	1457 x 497 x 3 mm	1x	1957 x 497 x 3 mm
• H-profiles	1x	L = 1021 mm	1x	L = 1521 mm	1x	L = 2021 mm
	1x	L = 965 mm	1x	L = 1465 mm	1x	L = 1965 mm
• vertical spacers		-	2x	190 x 89 x 22 mm	2x	190 x 89 x 22 mm
• distance holders	2x	43 x 30 x 23 mm	2x	43 x 30 x 23 mm	2x	43 x 30 x 23 mm
• fixing material						
Weight (net):						
• roof panel top	1x	1750 g (3.9 lbs)	1x	2600 g (5.7 lbs)	1x	3450 g (7.6 lbs)
• roof panel bottom	1x	1650 g (3.6 lbs)	1x	2550 g (5.6 lbs)	1x	3400 g (7.5 lbs)
• H-profiles	1x	700 g (1.5 lbs)	1x	1000 g (2.2 lbs)	1x	1350 g (3.0 lbs)
	1x	650 g (1.4 lbs)	1x	1000 g (2.2 lbs)	1x	1300 g (2.9 lbs)
• vertical spacers	-	-	2x	50 g (0.1 lbs)	2x	50 g (0.1 lbs)
Weight (gross)	6 kg (13.2 lbs)		10 kg (22 lbs)		13 kg (28.7 lbs)	
Packing dimensions	1050 x 510 x 60 mm (61.0 x 20.1 x 2.4 in.)		1550 x 510 x 60 mm (61.0 x 20.1 x 2.4 in.)		2050 x 510 x 60 mm (80.7 x 20.1 x 2.4 in.)	

Type	Roof panel set (extension) 1,0 m (3x2 pcs)		Roof panel set (extension) 1,5 m (3x2 pcs)		Roof panel set (extension) 2,0 m (3x2 pcs)	
Article number	9750402010		9750402020		9750402030	
Scope of supply:						
• roof panel top	3x	997 x 497 x 3 mm	3x	1497 x 497 x 3 mm	3x	1997 x 497 x 3 mm
• roof panel bottom	3x	957 x 497 x 3 mm	3x	1457 x 497 x 3 mm	3x	1957 x 497 x 3 mm
• H-profiles	3x	L = 1021 mm	3x	L = 1521 mm	3x	L = 2021 mm
	3x	L = 965 mm	3x	L = 1465 mm	3x	L = 1965 mm
• vertical spacers		-	6x	190 x 89 x 22 mm	6x	190 x 89 x 22 mm
• distance holders	6x	43 x 30 x 23 mm	6x	43 x 30 x 23 mm	6x	43 x 30 x 23 mm
• fixing material						
Weight (net):						
• roof panel top	3x	1750 g (3.9 lbs)	3x	2600 g (5.7 lbs)	3x	3450 g (7.6 lbs)
• roof panel bottom	3x	1650 g (3.6 lbs)	3x	2550 g (5.6 lbs)	3x	3400 g (7.5 lbs)
• H-profiles	3x	700 g (1.5 lbs)	3x	1000 g (2.2 lbs)	3x	1350 g (3.0 lbs)
	3x	650 g (1.4 lbs)	3x	1000 g (2.2 lbs)	3x	1300 g (2.9 lbs)
• vertical spacers	-	-	6x	50 g (0.1 lbs)	6x	50 g (0.1 lbs)
Weight (gross)	16,5 kg (36.4 lbs)		27 kg (59.5 lbs)		35 kg (77.2 lbs)	
Packing dimensions	1050 x 510 x 60 mm (61.0 x 20.1 x 2.4 in.)		1550 x 510 x 60 mm (61.0 x 20.1 x 2.4 in.)		2050 x 510 x 60 mm (80.7 x 20.1 x 2.4 in.)	

Product type	Roof panel set (extension)
Article no.	<i>refer to table 1</i>
Product category	modular extraction hoods
Version	170211/E

Always check the latest version on www.plymovent.com.