

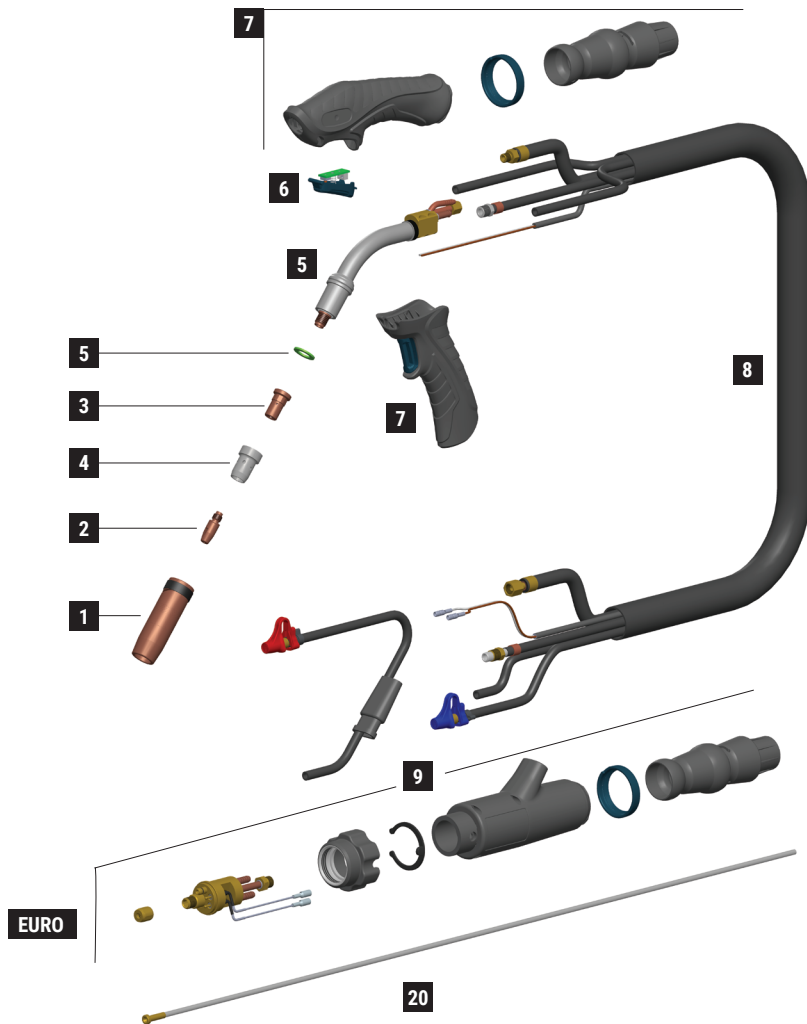
# ERGOPLUS 400

CE EN60974-7



| CODE       | ↔   |       |  |   |
|------------|-----|-------|--|---|
| MB2601-030 | 3 m | 10'   |  | 1 |
| MB2601-040 | 4 m | 12'   |  | 1 |
| MB2601-050 | 5 m | 16.4' |  | 1 |

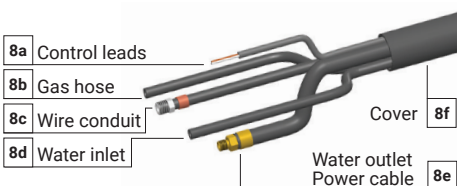
| TECHNICAL DATA      |                     |               |
|---------------------|---------------------|---------------|
| <b>ERGOPLUS 400</b> |                     |               |
|                     | 1,25 kg             | 2.76 lb       |
|                     | 113                 |               |
| <b>V PEAK</b>       | 113                 |               |
|                     | 1,0 ÷ 1,6 mm        | .040" ÷ 1/16" |
| <b>X 100%</b>       | 400A CO2 - 350A Mix |               |
|                     | 2÷4 bar             |               |
|                     | 1,6 l/min           |               |



|    | CODE      |  |  | Ø            |               | ↔     | REF     |          |    |
|----|-----------|--|--|--------------|---------------|-------|---------|----------|----|
| 1  | MC0268    |  | nozzle - 2,5 mm thickness                      | 16 mm        | 5/8"          | 76 mm | 3"      | 145.0085 | 10 |
| 1  | MC0276    |  | nozzle - 2 mm thickness                        | 16 mm        | 5/8"          | 76 mm | 3"      | 145.0085 | 10 |
| 1  | MC0290    |  | nozzle - 2,5 mm thickness                      | 14 mm        | 9/16"         | 76 mm | 3"      | 145.0132 | 10 |
| 1  | MC0291    |  | nozzle - 2,5 mm thickness                      | 20 mm        | 25/32"        | 76 mm | 3"      | 145.0051 | 10 |
| 1  | MC0292    |  | nozzle - 2,5 mm thickness                      | 15 mm        | 19/32"        | 76 mm | 3"      | -        | 10 |
| 1  | MC0293    |  | nozzle - 2,5 mm thickness                      | 20 mm        | 25/32"        | 82 mm | 3-7/32" | 145.0179 | 10 |
| 1  | MC0340    |  | heavy duty nozzle<br>- 3 mm thickness          | 16 mm        | 5/8"          | 76 mm | 3"      | -        | 10 |
| 1  | MC0568    |  | quick release nozzle<br>- 2,5 mm thickness     | 16 mm        | 5/8"          | 76 mm | 3"      | -        | 10 |
| 1  | MC0576    |  | quick release light nozzle<br>- 2 mm thickness | 16 mm        | 5/8"          | 76 mm | 3"      | -        | 10 |
| 2  | MD0005-80 |  | M8 - CuCrZr                                    | 1,0 mm       | .040"         | 30 mm | 1"-3/16 | 140.0316 | 10 |
| 2  | MD0005-82 |  | M8 - CuCrZr                                    | 1,2 mm       | .045"         | 30 mm | 1"-3/16 | 140.0445 | 10 |
| 2  | MD0005-84 |  | M8 - CuCrZr                                    | 1,4 mm       | .052"         | 30 mm | 1"-3/16 | 140.0536 | 10 |
| 2  | MD0005-86 |  | M8 - CuCrZr                                    | 1,6 mm       | 1/16"         | 30 mm | 1"-3/16 | 140.0590 | 10 |
| 3  | ME0076    |  | M8 - brass                                     |              |               | 25 mm | 31/32"  | -        | 10 |
| 3  | ME0083    |  | M8 - brass                                     |              |               | 29 mm | 1"-5/32 | -        | 10 |
| 3  | ME0390    |  | M8 - copper                                    |              |               | 25 mm | 31/32"  | -        | 10 |
| 4  | ME0074    |  | plastic  |              |               | 28 mm | 1"-3/32 | -        | 10 |
| 4  | ME0079    |  | plastic  |              |               | 29 mm | 1"-5/32 | 300029   | 10 |
| 4  | ME0479    |  | high-tech plastic                              |              |               | 28 mm | 1"-3/32 | -        | 10 |
| 4  | ME0579    |  | ceramic  | 16 mm        | 5/8"          | 28 mm | 1"-3/32 | -        | 10 |
| 20 | GM0530    |  | uncoated steel liner                           | 1,2 ÷ 1,6 mm | .045" ÷ 1/16" | 3 m   | 10'     | -        | 10 |
| 20 | GM0531    |  | uncoated steel liner                           | 1,2 ÷ 1,6 mm | .045" ÷ 1/16" | 4 m   | 12'     | -        | 10 |
| 20 | GM0532    |  | uncoated steel liner                           | 1,2 ÷ 1,6 mm | .045" ÷ 1/16" | 5 m   | 16.4'   | -        | 10 |

|   | CODE       |  |                            |    |
|---|------------|--|----------------------------|----|
| 5 | FB1278     |  | insulator                  | 10 |
| 5 | MG0285     |  | Ergoplus 400 torch head    | 1  |
| 6 | MT0563     |  | trigger kit                | 1  |
| 7 | MT0560     |  | handle kit                 | 1  |
| 7 | MT0566     |  | pistol grip                | 1  |
| 8 | MN2014-030 |  | cable assembly - 3 m / 10' | 1  |

|   | CODE       |  |                              |    |
|---|------------|--|------------------------------|----|
| 8 | MN2014-040 |  | cable assembly - 4 m / 12'   | 1  |
| 8 | MN2014-050 |  | cable assembly - 5 m / 16.4' | 1  |
| 9 | AR0052     |  | EURO connector               | 1  |
| 9 | BW0020     |  | metal EURO nut               | 10 |
| 9 | FA0026     |  | liner nut M10x1              | 10 |
| 9 | MT0564     |  | Back box kit                 | 1  |



|    | CODE       | ↔         |
|----|------------|-----------|
| 8a | BX1421-030 | 3 m / 10' |
| 8b | QB0231-030 | 3 m / 10' |
| 8c | QB0230-030 | 3 m / 10' |
| 8d | QB0232-030 | 3 m / 10' |
| 8e | QA0030-030 | 3 m / 10' |
| 8f | MQ0125-030 | 3 m / 10' |

|    | CODE       | ↔         |
|----|------------|-----------|
| 8a | BX1421-040 | 4 m / 12' |
| 8b | QB0231-040 | 4 m / 12' |
| 8c | QB0230-040 | 4 m / 12' |
| 8d | QB0232-040 | 4 m / 12' |
| 8e | QA0030-040 | 4 m / 12' |
| 8f | MQ0125-040 | 4 m / 12' |

|    | CODE       | ↔           |
|----|------------|-------------|
| 8a | BX1421-050 | 5 m / 16.4' |
| 8b | QB0231-050 | 5 m / 16.4' |
| 8c | QB0230-050 | 5 m / 16.4' |
| 8d | QB0232-050 | 5 m / 16.4' |
| 8e | QA0030-050 | 5 m / 16.4' |
| 8f | MQ0125-050 | 5 m / 16.4' |

STANDARD