

# BESTER 215MP

---

Spare Parts.....	1
Figure A: Machine Assembly .....	2
Electrical Schematic .....	3
CODE : 50524.....	3



# Spare Parts

SP50524 REV00  
01/2020

ASSEMBLY PAGE NAME			Machine Assembly				
CODE NO.:	W NO.:	FIGURE NO.:	A				
50524	B18260-1	BESTER 215MP	1				

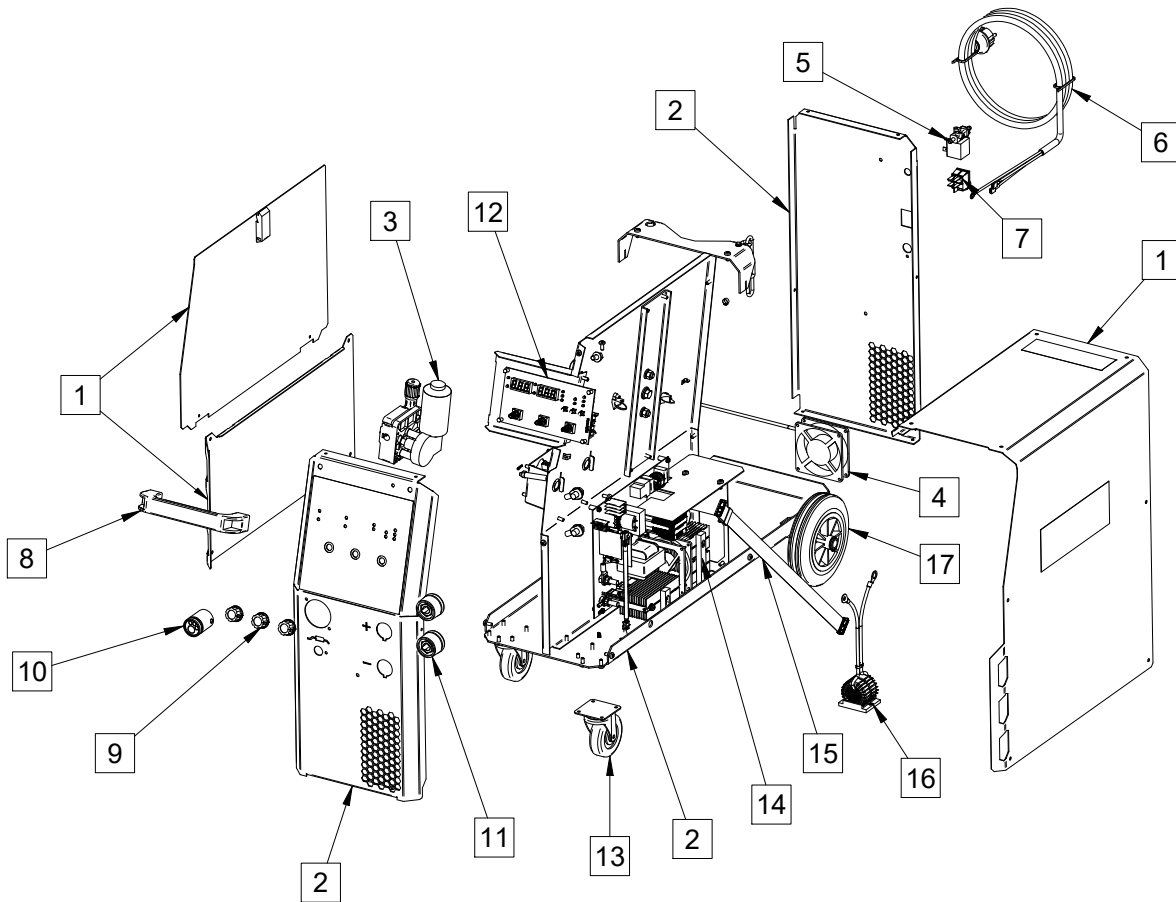


Figure A

**Figure A: Machine Assembly**

Item	Description	Part Number	QTY	1	2	3	4	5	6	7
1	HINGED PANEL	T-8040-059-1R	1	X						
	LEFT SIDE PANEL									
	SIDE									
2	REAR	T-8040-060-1R	1	X						
	FRONT PANEL									
	BASE PANEL									
3	WIRE FEEDER	0744-000-269R	1	X						
4	DC FAN	S33551-5R	1	X						
5	SOLENOID VALVE	0972-423-040R	1	X						
6	POWER CABLE	S33551-11R	1	X						
7	SWITCH ON/OFF	S33551-6R	1	X						
8	HANDLE	1361-598-186R	1	X						
9	KNOB	S33551-9R	3	X						
10	TORCH CONNECTION	R-8040-473-1R	1	X						
11	WELDING SOCKET	2EINN0500FR	2	X						
12	DISPLAY BOARD	S33551-1R	1	X						
13	FRONT WHEEL	1029-660-004R	2	X						
14	MAIN BOARD	S33551-2R	1	X						
15	RIBBON CABLE	S33551-3R	1	X						
16	OUTPUT CHOKE	S33551-4R	1	X						
17	REAR WHEEL	1029-660-007R	2	X						

# Electrical Schematic

CODE : 50524

