

# SPARK PROTECTION

Parweld’s safety apparel offers the users protection against hazards in the workplace.

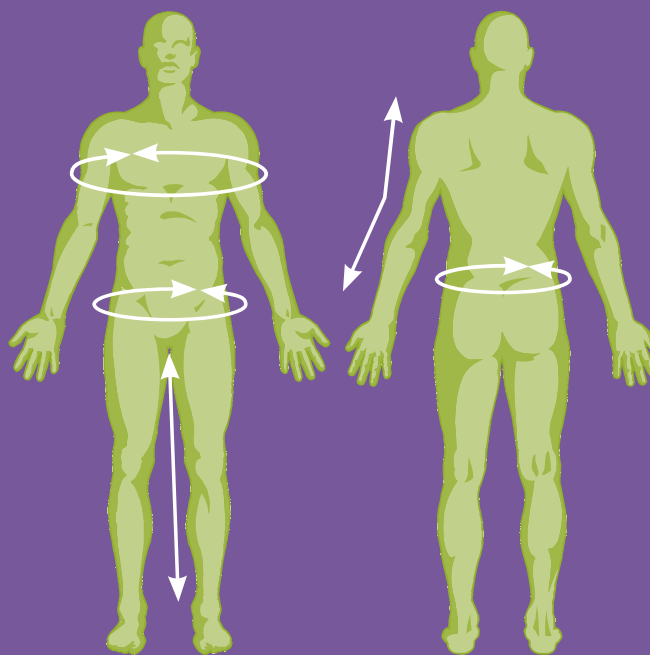
All Parweld’s leather wear is tested and certified to BS EN ISO 11611:2007.

## DEFINITIONS

### BS EN ISO 11611:2007 Class 1

**The product must:**

- Offer protection against low level hazardous welding techniques and situations, causing lower levels of spatter and radiant heat.
- Provide adequate protection fit for the intended purpose.
- ISO 11611:2007 specifies minimum basic safety requirements and test methods for protective clothing including hoods, aprons, sleeves and gaiters that are designed to protect the wearer’s body including head (hoods) and feet (gaiters) and that are to be worn during welding and allied processes with comparable risks.
- For the protection of the wearer’s head and feet, ISO 11611:2007 is only applicable to hoods and gaiters.
- ISO 11611:2007 does not cover requirements for hand protection.



## HOW TO MEASURE

### BS EN 13402

**Sleeve**

- With your arms in a slightly bent position, measure from the centre of the back of your neck, along the length of your arm to the wrist.

**Chest**

- Measure around your chest holding the measuring tape under your armpits.

**Waist**

- Measure around your waist at the narrowest part.

**Hip**

- Measure around your hips at the widest part.

**Inside Leg**

- From a standing position, measure from your groin to your ankle.

	Chest	Waist
<b>M</b>	40" – 42" 100cm – 108cm	32" – 34" 80" – 88"
<b>L</b>	44" – 46" 112cm – 116cm	36" – 38" 92cm – 96cm
<b>XL</b>	48" – 50" 120cm – 124cm	40" – 42" 100cm – 108cm
<b>XXL</b>	52" 128cm+	44" – 50" 112cm – 116cm

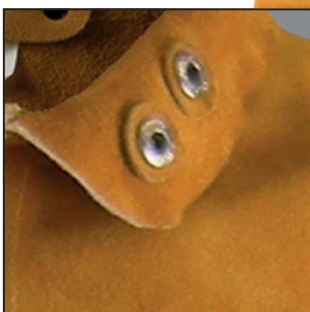
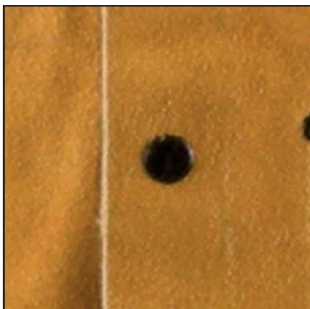
# PANTHER LEATHER WELDING JACKET

SPLIT COW HIDE

Stock Code P3788

Sizes M, L, XL and XXL

PPE



## FEATURES

- Worn Over Garments To Protect Body and Arms from Sparks and Spatter
- Stand Up Collar
- Adjustable Wrists
- Inside Pocket
- Side Take Up Straps
- Kevlar® Stitched
- 1.2mm Thick Cow Hide

## STANDARDS

- BS EN ISO 11611:2007
- Class 1