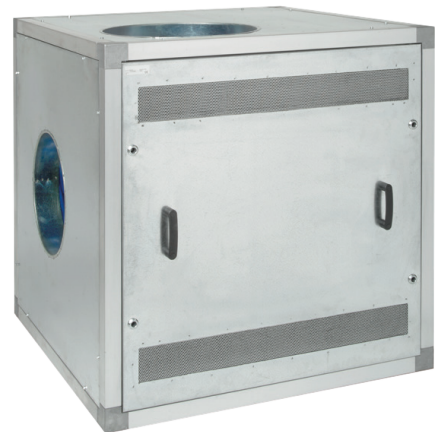


## SIF RANGE

### SIF-700/900/1200/1500/1800/1900/2000 LI/RI

Extraction fan with straight blades to be used in central welding fume extraction systems or general filtration systems. It is mounted in a sound absorbing case with inspection cover either left ("LI" type) or right ("RI" type). The fan is equipped with flexible inlet and outlet adapters and placed on shock absorbers.

In case it is combined with a central filter unit, the fan has to be connected to the *outlet* side of the filter unit.



#### APPLICATIONS

The fan is intended to be used in the following configurations:

- multiple arm systems
- modular extraction hood systems
- push-pull systems



#### SPECIFICATIONS

##### Physical properties

|                    |  |  |
|--------------------|--|--|
| Material:          | <ul style="list-style-type: none"> <li>• fan</li> <li>• housing</li> </ul> | <ul style="list-style-type: none"> <li>• steel</li> <li>• steel with aluminium profiles and corners</li> </ul> |
| Motor design       | IEC 132 (WEG)  |  |
| Discharge position | RD 0   |  |
| Fan type           | radial   |  |
| Design conditions  | 20°C (68°F) at sea level   |  |

##### Performance

|  |                                     |
|--|-------------------------------------|
| Speed of revolutions   | 2850 rpm                            |
| Noise level according to ISO 3746 (fan without sound absorbing case) | <i>refer to attached fan curves</i> |
| Noise reduction sound absorbing case                                 | approx. 10 dB(A)                    |

##### Electrical data

|                           |                   |
|---------------------------|-------------------|
| Connection voltage        | 400-690V/3ph/50Hz |
| Max. start/stops per hour | 20                |
| Insulation class          | F with PTC        |
| Protection class          | IP 55             |




##### Ambient conditions

|                        |   |   |
|------------------------|---|---|
| Operating temperature: | <ul style="list-style-type: none"> <li>• min.</li> <li>• nom.</li> <li>• max.</li> </ul>                    | <ul style="list-style-type: none"> <li>• 5°C (41°F)</li> <li>• 20°C (68°F)</li> <li>• 60°C (140°F)</li> </ul> |
| Max. relative humidity | 80%   |   |
| Storage conditions     | <ul style="list-style-type: none"> <li>• 5-60°C (41-140°F)</li> <li>• relative humidity max. 80%</li> </ul> |   |

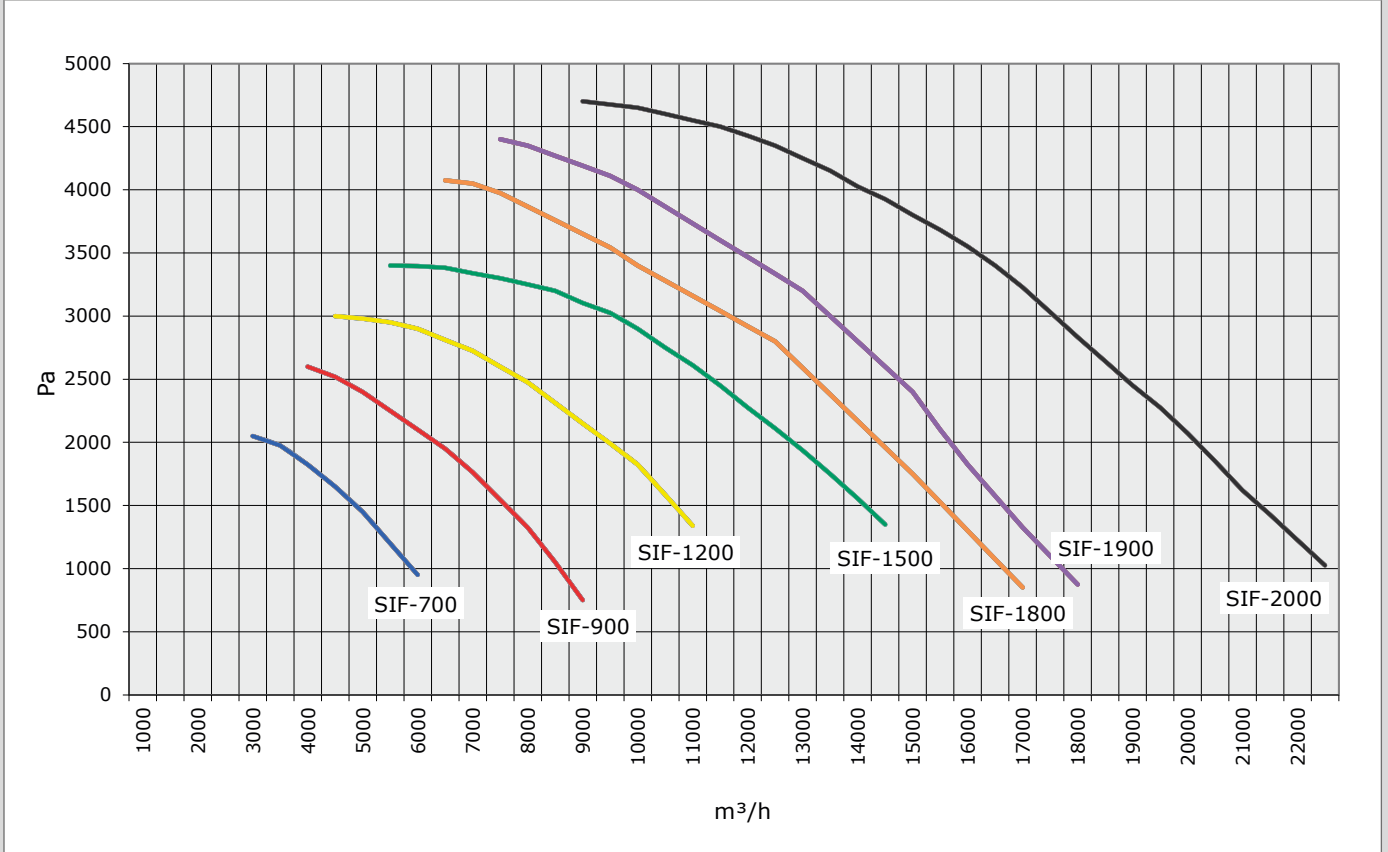
#### Options and accessories

|  |  |
|--|--|
| Mounting frame   | <i>refer to table on page 3</i>  |
| Silencer (straight or elbow 90°)                             | <i>refer to table on page 3</i>  |
| SIF outdoor; fans suitable for outdoor use (rain-resistant)  | <p>Outdoor kit consists of:</p> <ul style="list-style-type: none"> <li>• rain cover over sound absorbing case, including coupler for duct or silencer</li> <li>• ventilation grids provided with rain cover</li> <li>• seams of the absorbing case being fully sealed (except for the inspection cover)</li> </ul> <p><b>SIF outdoor</b></p> <ul style="list-style-type: none"> <li>• -20°C (-4°F)</li> <li>• 20°C (68°F)</li> <li>• 60°C (140°F)</li> </ul> |
| Operating temperature:                                       | <ul style="list-style-type: none"> <li>• min.</li> <li>• nom.</li> <li>• max.</li> </ul>   |
| <b>Scope of supply</b>                                       |  |
| Extraction fan in sound absorbing case - Key - Strain relief |  |
| <b>Order information</b>                                     |  |
| Number/package   | 1  |
| <b>Shipping data</b>   |  |
| Harmonized Tariff Code                                       | 8414.5940.90   |
| Country of origin  | Netherlands  |

#### APPROVALS/CERTIFICATES

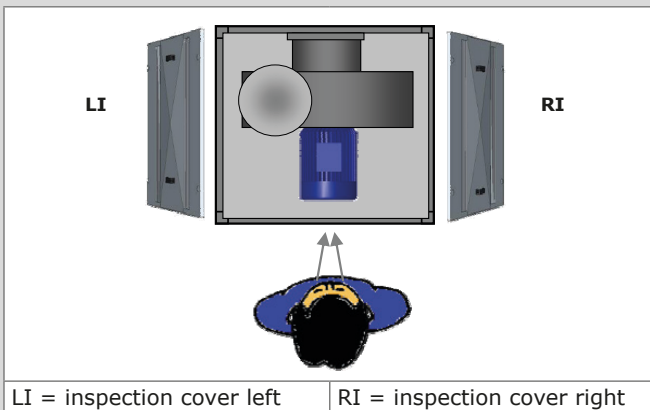
|  |   |
|--|---|
|   |   |
|   | Motor fan   |
|  | Directive 2011/65/EC (RoHS) valid as of 8 June 2011 |

## FAN CURVES (QUICK REFERENCE GUIDE)



Detailed fan curves: refer to attachments

## INSPECTION COVER



LI = inspection cover left

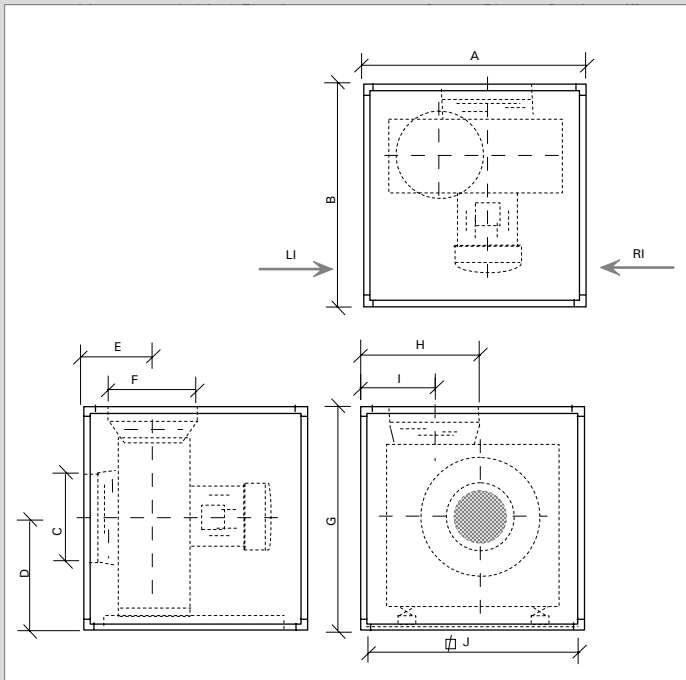
RI = inspection cover right

Remaining specifications: refer to table on next page.

Table: remaining specifications

|   | SIF-700                        |             | SIF-900    |             | SIF-1200   |             | SIF-1500   |             | SIF-1800   |             | SIF-1900   |             | SIF-2000   |             |
|---|--------------------------------|-------------|------------|-------------|------------|-------------|------------|-------------|------------|-------------|------------|-------------|------------|-------------|
| <b>■ Electrical data</b>                          |                                |             |            |             |            |             |            |             |            |             |            |             |            |             |
| Power   | <b>kW</b>                      | <b>HP</b>   | <b>kW</b>  | <b>HP</b>   | <b>kW</b>  | <b>HP</b>   | <b>kW</b>  | <b>HP</b>   | <b>kW</b>  | <b>HP</b>   | <b>kW</b>  | <b>HP</b>   | <b>kW</b>  | <b>HP</b>   |
|   | 3                              | 4           | 5,5        | 7           | 7,5        | 10          | 11         | 20          | 15         | 20          | 18,5       | 25          | 22         | 30          |
| Nominal current                                   | 5,81 A                         |             | 10,6 A     |             | 13,6 A     |             | 21,0 A     |             | 28,0 A     |             | 34,2 A     |             | 38,7 A     |             |
| <b>■ Available options</b>                        |                                |             |            |             |            |             |            |             |            |             |            |             |            |             |
| Mounting frame                                    | Refer to selection table below |             |            |             |            |             |            |             |            |             |            |             |            |             |
| Silencer (straight or elbow 90°)                  | <b>mm</b>                      | <b>inch</b> | <b>mm</b>  | <b>inch</b> | <b>mm</b>  | <b>inch</b> | <b>mm</b>  | <b>inch</b> | <b>mm</b>  | <b>inch</b> | <b>mm</b>  | <b>inch</b> | <b>mm</b>  | <b>inch</b> |
|   | Ø 400                          | Ø 15.7      | Ø 500      | Ø 19.7      | Ø 500      | Ø 19.7      | Ø 630      | Ø 24.8      | Ø 630      | Ø 24.8      | Ø 630      | Ø 24.8      | Ø 630      | Ø 24.8      |
| <b>■ Dimensions (ref. image below) and weight</b> |                                |             |            |             |            |             |            |             |            |             |            |             |            |             |
|   | <b>mm</b>                      | <b>inch</b> | <b>mm</b>  | <b>inch</b> | <b>mm</b>  | <b>inch</b> | <b>mm</b>  | <b>inch</b> | <b>mm</b>  | <b>inch</b> | <b>mm</b>  | <b>inch</b> | <b>mm</b>  | <b>inch</b> |
| A, B, G   | 1000                           | 39.4        | 1100       | 43.3        | 1100       | 43.3        | 1300       | 51.2        | 1300       | 51.2        | 1300       | 51.2        | 1400       | 55.1        |
| C (interior)                                      | Ø 400                          | Ø 15.7      | Ø 400      | Ø 15.7      | Ø 400      | Ø 15.7      | Ø 400      | Ø 15.7      | Ø 630      | Ø 24.8      | Ø 630      | Ø 24.8      | Ø 630      | Ø 24.8      |
| D   | 500                            | 19.7        | 550        | 21.7        | 550        | 21.7        | 650        | 25.6        | 650        | 25.6        | 650        | 25.6        | 700        | 27.6        |
| E, I  | 336                            | 13.2        | 354        | 13.9        | 372        | 14.6        | 400        | 15.7        | 400        | 15.7        | 400        | 15.7        | 425        | 16.7        |
| F (interior)                                      | Ø 400                          | Ø 15.7      | Ø 500      | Ø 19.7      | Ø 500      | Ø 19.7      | Ø 630      | Ø 24.8      | Ø 630      | Ø 24.8      | Ø 630      | Ø 24.8      | Ø 630      | Ø 24.8      |
| H   | 530                            | 20.9        | 571        | 22.5        | 612        | 24.1        | 669        | 26.3        | 669        | 26.3        | 669        | 26.3        | 715        | 28.1        |
| J   | 910                            | 35.8        | 1010       | 39.8        | 1010       | 39.8        | 1210       | 47.6        | 1210       | 47.6        | 1210       | 47.6        | 1310       | 51.6        |
| Weight (net)                                      | <b>kg</b>                      | <b>lbs</b>  | <b>kg</b>  | <b>lbs</b>  | <b>kg</b>  | <b>lbs</b>  | <b>kg</b>  | <b>lbs</b>  | <b>kg</b>  | <b>lbs</b>  | <b>kg</b>  | <b>lbs</b>  | <b>kg</b>  | <b>lbs</b>  |
|   | 175                            | 386         | 225        | 496         | 250        | 551         | 325        | 717         | 335        | 739         | 350        | 772         | 400        | 882         |
| <b>■ Order information</b>                        |                                |             |            |             |            |             |            |             |            |             |            |             |            |             |
| Article number:                                   | 7906061020                     |             | 7906061120 |             | 7906060220 |             | 7906060320 |             | 7906061220 |             | 7906061320 |             | 7906060920 |             |
| • SIF/LI  | 7906061010                     |             | 7906061110 |             | 7906060210 |             | 7906060310 |             | 7906061210 |             | 7906061310 |             | 7906060910 |             |
| • SIF/RI  | 0000102170                     |             | 0000102172 |             | 0000102174 |             | 0000102176 |             | 0000102178 |             | 0000102180 |             | 0000102182 |             |
| • SIF/LI outdoor                                  | 0000102169                     |             | 0000102171 |             | 0000102173 |             | 0000102175 |             | 0000102177 |             | 0000102179 |             | 0000102181 |             |
| • SIF/RI outdoor                                  |                                |             |            |             |            |             |            |             |            |             |            |             |            |             |
| <b>■ Shipping data</b>                            |                                |             |            |             |            |             |            |             |            |             |            |             |            |             |
| Gross weight (incl. pallet)                       | <b>kg</b>                      | <b>lbs</b>  | <b>kg</b>  | <b>lbs</b>  | <b>kg</b>  | <b>lbs</b>  | <b>kg</b>  | <b>lbs</b>  | <b>kg</b>  | <b>lbs</b>  | <b>kg</b>  | <b>lbs</b>  | <b>kg</b>  | <b>lbs</b>  |
|   | 190                            | 419         | 240        | 529         | 265        | 584         | 340        | 750         | 350        | 772         | 365        | 805         | 420        | 926         |

**■ Dimensions (ref. table above)**



**SELECTION TABLE: FAN MOUNTING FRAMES**

| Fan type           | Filter system         | Mounting frame <sup>*)</sup> |
|--------------------|-----------------------|------------------------------|
| SIF-700            | MDB-6 <sup>**)</sup>  | Frame SIF-700/M              |
|                    | SCS                   | Frame SIF-700/S              |
| SIF-900/1200       | MDB-8                 | Frame SIF-900/M              |
|                    | MDB-6                 | Frame SIF-900/1200           |
|                    | MDB-10 <sup>**)</sup> | Frame SIF-900/1200           |
|                    | SCS                   | Frame SIF-900/1200           |
| SIF-1500/1800/1900 | MDB-12/16             | Frame SIF-1500               |
| SIF-1500           | SCS                   | Frame SIF-1500               |
| SIF-2000           | MDB-20 <sup>**)</sup> | Frame SIF-2000/M             |
|                    | SCS                   | Frame SIF-2000/S             |

\*) The frame height is based on MDB units with a vertical outlet.  
 \*\*) This concerns configurations consisting of filter modules MBD-BM/2 and MDB-BM/4. Filter module MDB-BM/2 to be mounted *underneath* MDB-BM/4.

|                  |                            |
|------------------|----------------------------|
| Product type     | <b>SIF range</b>           |
| Article no.      | refer to order information |
| Product category | central fans               |
| Version          | 101013/G                   |

Always check the latest version on [www.plymovent.com](http://www.plymovent.com)