

PJ3 Pipe Jacks

- 1,000kg / 2,205lbs load capacity
- Choice of fixed base, flat packed fixed or folding leg base
- Folding legs allow for easy storage and transportation
- Comprehensive range of head types
- Adjustable in height from 27"-48" (71cm-122cm)
- Independently load tested



STD V-Head options

Base Units



Part No.	Stand Type	Weight KG/LBS	Pipe Size
PJ3FXB	Fixed leg	7.0 / 15.4	up to 12"
PJ3FLB	Folding leg	7.0 / 15.4	up to 12"
PJ3FXB-FP	Flat pack fixed leg	7.0 / 15.4	up to 12"

Vee Head



Part No.	Load capacity KG/LBS	Weight KG/LBS	Pipe Size
PJ3V	1,000	3.4/7	up to 12"

Steel Wheels



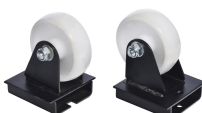
Part No.	Load capacity KG/LBS	Weight KG/LBS	Pipe Size
SWK3	1,000/2,205	3.4/7	1"-12"
SWK3SS	1,000/2,205	3.4/7	1"-12"

Pipe Roller Head - Steel Wheels



Part No.	Load capacity KG/LBS	Weight KG/LBS	Pipe Size
SWK350	1,000/2,205	4.9/11	1"-12"
SWK350SS	1,000/2,205	3.4/7	1"-12"

Nylon Wheels



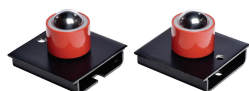
Part No.	Load capacity KG/LBS	Weight KG/LBS	Pipe Size
NWK3	450/992	2/5	1"-12"

Pipe Roller Head - Nylon Wheels



Part No.	Load capacity KG/LBS	Weight KG/LBS	Pipe Size
NWK350	450/990	4.9/11	1"-12"

Ball Transfers



Part No.	Load capacity KG/LBS	Weight KG/LBS	Pipe Size
BTK3	600/1320	2.5/6	1"-12"
BTK3SS	600/1320	2.5/6	1"-12"

Stainless Steel - Exclusive to GBC UK



Part No.	Load capacity KG/LBS	Weight KG/LBS	Pipe Size
SSC3	1,000/2,205	1.0/2	1"-12"

Roller Bar Head



Part No.	Load capacity KG/LBS	Weight KG/LBS	Pipe Size
RBH	1,000/2,205	4.25/9	1/8"-10"

Pipe Hold Down Kit



Part No.	Load capacity KG/LBS	Weight KG/LBS	Pipe Size
HDK12	N/A	7/16	1"-12"

PJ3 Pipe Jacks

Large V-Head options

- 1,000kg / 2,205lbs load capacity
- Choice of fixed base or folding leg base
- Folding legs allow for easy storage and transportation
- Comprehensive range of head types
- Adjustable in height from 27"-48" (71cm-122cm)
- Independently load tested



Large Vee Head



Part No.	Load capacity KG/LBS	Weight KG/LBS	Pipe Size
LVH	1,000	7.6/17	up to 24"

Ball Transfers

Part No.	Load capacity KG/LBS	Weight KG/LBS	Pipe Size
BTK4	600/1,320	2.3/5	1"-24"
BTK4SS	600/1,320	2.3/5	1"-24"

Steel Wheels



Part No.	Load capacity KG/LBS	Weight KG/LBS	Pipe Size
SWK4	1,000	3/6	1"-24"
SWK4SS	1,000	3/6	1"-24"

Stainless Steel Sleeves



Part No.	Load capacity KG/LBS	Weight KG/LBS	Pipe Size
SSC4	1,000/2,205	1/2	1"-24"

Nylon Wheels



Part No.	Load capacity KG/LBS	Weight KG/LBS	Pipe Size
NWK4	450/990	1.8/4	1"-24"

Hold Down Device



Part No.	Load capacity KG/LBS	Weight KG/LBS	Pipe Size
HDK	N/A	7/16	1"-12"