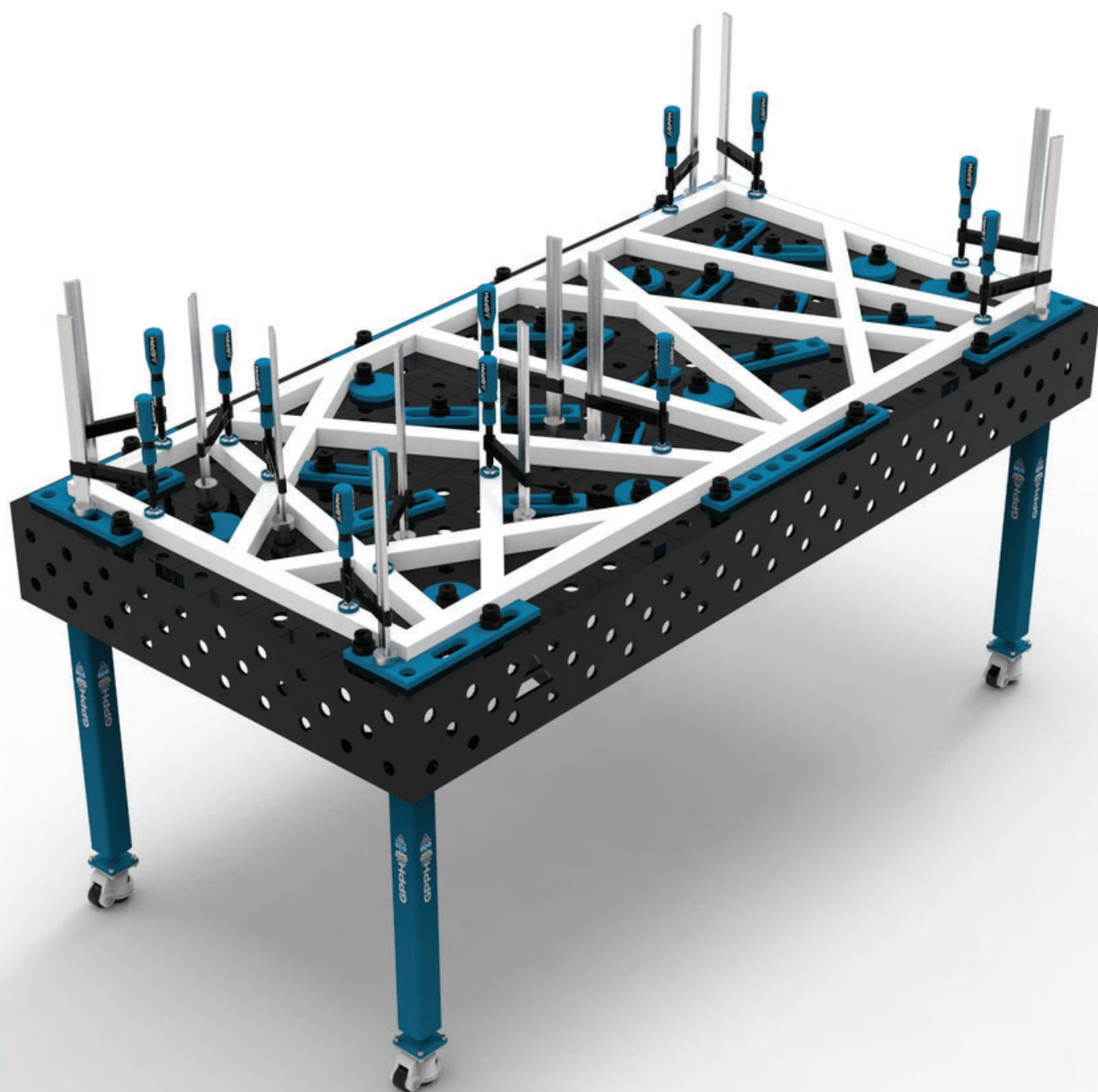
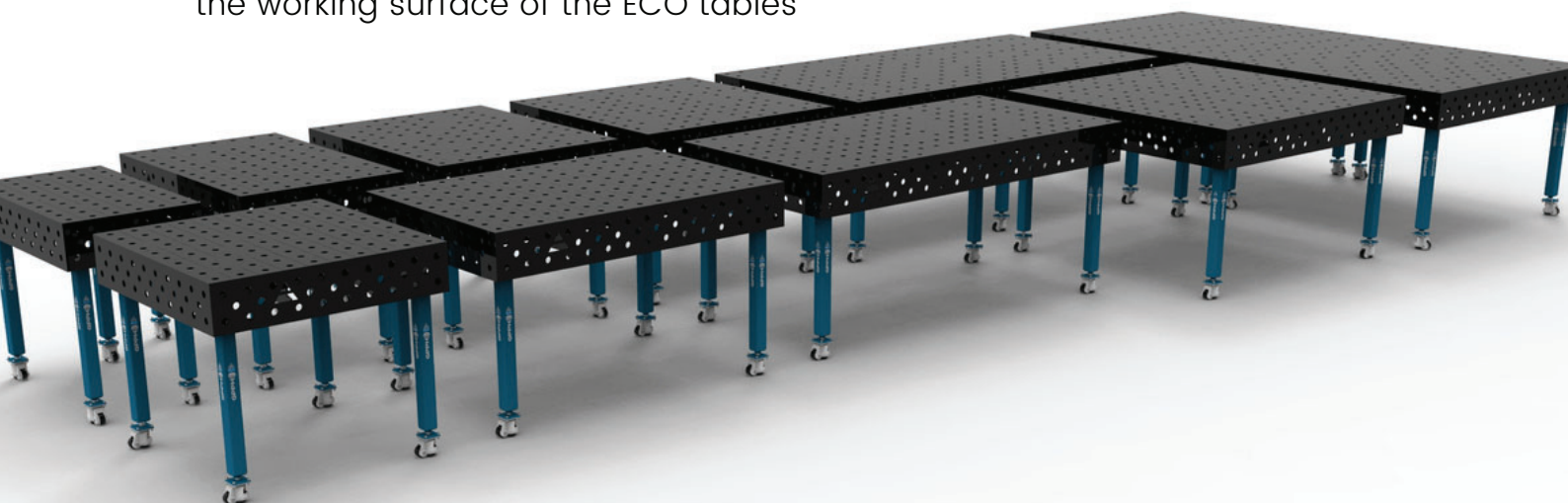


TRADITIONAL WELDING TABLES **ECO**



TECHNICAL PARAMETERS

- ✓ Stable and massive construction
- ✓ The highest quality of workmanship
- ✓ Perfect flatness of the table [$\pm 0,5\text{mm}$]
- ✓ Made of S355J2+N
- ✓ Holes of system $\varnothing 16$ in the grid 50x50mm or 100x100mm or holes of system $\varnothing 28$ in the grid 100x100mm
- ✓ Three grids of holes on the 4 sides
- ✗ Chamfered and milled holes to facilitate the assembly of tools (holes in the basic ECO version are laser cut)
- ✓ Engraved scale in the grid 100x100mm
- ✓ Height adjustment of the table with standard legs approx. 880-930mm
- ✓ Possibility of using stainless steel covers
- ✓ Tables can be combined freely to extend a working surface
- ✓ All tables are reinforced with ribs
- ✓ Produced with standard ISO 2768-1
- ✗ Milled worktop edges
- Thickness **8mm**
- Table legs made of profile **60x60mm**
- Capacity: **250kg/leg***
- Tools from the PLUS series, fixed with the PLUS/ECO bolt, are compatible with the ECO series welding tables
- Table extensions and connectors from the ECO series are intended to increase the working surface of the ECO tables



*Applies to standard legs on the foot. When it comes to legs on wheels, it is the static load capacity - it refers to the situation where the table is supported on the feet protruding from the wheels.

DIMENSIONS OF TRADITIONAL WELDING TABLES^{ECO}

GPPH TRDITIONAL WELDING TABLE^{ECO} TWT.ECO.300148



- length x width: 3000x1480mm
- side plate: 200 mm
- table weight: approx. 530 kg
- capacity: 2 000 kg
- number of legs: 8

* The 3000x1480 GPPH welding table consists of two 1500x1480 GPPH welding tables connected to each other.

GPPH TRDITIONAL WELDING TABLE^{ECO} TWT.ECO.240120



- length x width: 2400x1200mm
- side plate: 200 mm
- table weight: approx. 340 kg
- capacity: 1 500 kg
- number of legs: 6

DIMENSIONS OF TRADITIONAL WELDING TABLES^{ECO}

GPPH TRDITIONAL WELDING TABLE^{ECO} TWT.ECO.200100



- length x width: 2000x1000mm
- side plate: 200 mm
- table weight: approx. 250 kg
- capacity: 1 000 kg
- number of legs: 4

GPPH TRDITIONAL WELDING TABLE^{ECO} TWT.ECO.150148



- length x width: 1500x1480mm
- side plate: 200 mm
- table weight: approx. 270 kg
- capacity: 1 000 kg
- number of legs: 4

DIMENSIONS OF TRADITIONAL WELDING TABLES^{ECO}

GPPH TRDITIONAL WELDING TABLE^{ECO} TWT.ECO.150100



- length x width: 1500x1000mm
- side plate: 200 mm
- table weight: approx. 200 kg
- capacity: 1 000 kg
- number of legs: 4

GPPH TRDITIONAL WELDING TABLE^{ECO} TWT.ECO.120120



- length x width: 1200x1200mm
- side plate: 200 mm
- table weight: approx. 190 kg
- capacity: 1 000 kg
- number of legs: 4

DIMENSIONS OF TRADITIONAL WELDING TABLES^{ECO}

GPPH TRDITIONAL WELDING TABLE^{ECO} TWT.ECO.120100



- length x width: 1200x1000mm
- side plate: 200 mm
- table weight: approx. 170 kg
- capacity: 1 000 kg
- number of legs: 4

GPPH TRDITIONAL WELDING TABLE^{ECO} TWT.ECO.12080



- length x width: 1200x800mm
- side plate: 200 mm
- table weight: approx. 140 kg
- capacity: 1 000 kg
- number of legs: 4

DIMENSIONS OF TRADITIONAL WELDING TABLES^{ECO}

GPPH TRDITIONAL WELDING TABLE^{ECO} TWT.ECO.100100



- length x width: 1000x1000mm
- side plate: 200 mm
- table weight: approx. 150 kg
- capacity: 1 000 kg
- number of legs: 4

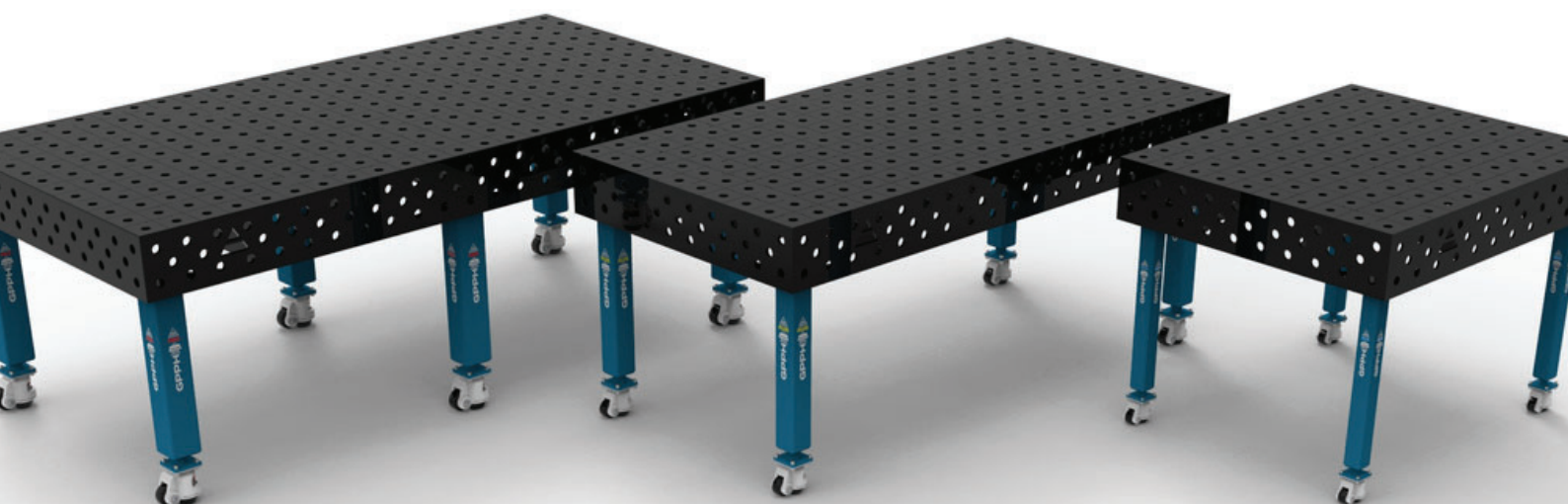
GPPH TRDITIONAL WELDING TABLE^{ECO} TWT.ECO.10060



- length x width: 1000x600mm
- side plate: 200 mm
- table weight: approx. 110 kg
- capacity: 1 000 kg
- number of legs: 4

NEED MORE MOBILITY OF YOUR WELDING TABLE?

CHECK OUT OUR OFFER OF WELDING TABLES
ON LEGS WITH WHEELS!



*The price of a leg on a wheel should be multiplied by the number of legs in the selected dimensional version, and then the total should be added to the net price of the chosen Welding Table.
When ordering legs with wheels, the customer receives only this version of the legs (no legs with feet).