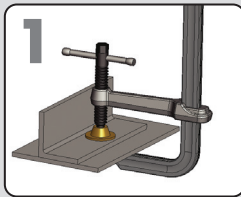


# 4-IN-1™ Utility Clamping System

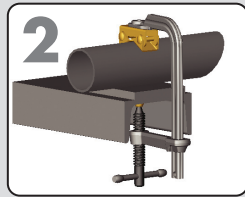
**BEST SELLERS**

The most versatile Sliding Arm Clamps in the market.

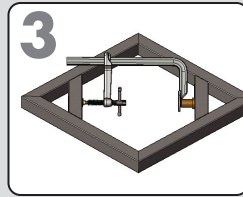
The strong, economical 4-IN-1 Utility Clamps adapt to serve four different applications.



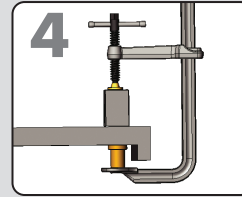
**1 Standard**  
Sliding Arm Clamps are 10x faster than a C-Clamp!



**2 Pipe**  
Add the exclusive V-Pad to create a Pipe Clamp!



**3 Spreader**  
Reverse the clamp arm and create a Spreader Clamp.



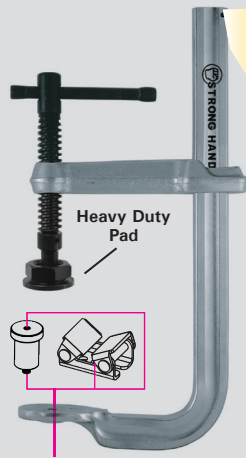
**4 Step-Over**  
Add the Extender Block to create a Step-Over Clamp.

The 4-IN-1 Clamp Kit comes complete with the V-Pad and Extender Block accessories.



Extender Block

V-Pad



**Spring Loaded Stop (UF, UG, UM)**  
Allows removal and reversal of the clamp arm for spreading.  
- UD models, remove keyring.  
- UP models, remove screw.



**Tapped Hole**  
For attaching accessories such as a V-Pad or Extender Block.



All Strong Hand Tools® Utility Clamps are made of high quality heat treated steel and nickel/chrome plated for strength and durability.

Part No.	Capacity	Throat Depth	Clamping Pressure	Pads	Rail Size	Tapped Hole	Weight
UD45-C3 UD45M-C3	4-1/2" 115 mm	3-1/4" 80 mm	500 lbs 230 kg	Standard	5/8" x 5/16" 16 mm x 8	5/16-18 M8	1.3 lbs 0.6 kg
UD65-C3 UD65M-C3	6-1/2" 165 mm	3-1/4" 80 mm	500 lbs 230 kg	Standard	5/8" x 5/16" 16 mm x 8	5/16-18 M8	1.6 lbs 0.7 kg
UF65-C3 UF65M-C3	6-1/2" 165 mm	4-3/4" 120 mm	1,000 lbs 460 kg	Standard	7/8" x 7/16" 22 mm x 11	3/8-16 M10	2.9 lbs 1.3 kg
UG85-C3 UG85M-C3	8-1/2" 215 mm	4-3/4" 120 mm	1,200 lbs 550 kg	Standard	1" x 15/32" 25 mm x 12	3/8-16 M10	4.1 lbs 1.9 kg
UG125-C3 UG125M-C3	12-1/2" 320 mm	4-3/4" 120 mm	1,200 lbs 550 kg	Standard	1" x 15/32" 25 mm x 12	3/8-16 M10	4.5 lbs 2.1 kg
UG1257-C3 UG1257M-C3	12-1/2" 320 mm	<b>DEEP THROAT</b> 7" 180 mm	800 lbs 350 kg	Standard	1" x 15/32" 25 mm x 12	3/8-16 M10	6.5 lbs 2.9 kg
UM85P-C3 UM85PM-C3	8-1/2" 215 mm	5-1/2" 140 mm	2,400 lbs 1,100 kg	Standard	1-3/16" x 9/16" 30 mm x 14	3/8-16 M10	6.6 lbs 3.0 kg
UM105P-C3 UM105PM-C3	10-1/2" 265 mm	5-1/2" 140 mm	2,400 lbs 1,100 kg	Standard	1-3/16" x 9/16" 30 mm x 14	3/8-16 M10	7.4 lbs 3.4 kg
UM125-C3 UM125M-C3	12-1/2" 320 mm	5-1/2" 140 mm	2,400 lbs 1,100 kg	Heavy Duty	1-3/16" x 9/16" 30 mm x 14	3/8-16 M10	7.6 lbs 3.5 kg
UM165-C3 UM165M-C3	16-1/2" 420 mm	5-1/2" 140 mm	2,400 lbs 1,100 kg	Heavy Duty	1-3/16" x 9/16" 30 mm x 14	3/8-16 M10	8.7 lbs 4.0 kg
UM205-C3 UM205M-C3	20-1/2" 520 mm	5-1/2" 140 mm	2,400 lbs 1,100 kg	Heavy Duty	1-3/16" x 9/16" 30 mm x 14	3/8-16 M10	9.8 lbs 4.5 kg
UP205-C3 UP205M-C3	20-1/2" 520 mm	<b>DEEP THROAT</b> 7" 180 mm	4,800 lbs 2,200 kg	Heavy Duty	1-9/16" x 3/4" 40 mm x 19	3/8-16 M10	16.1 lbs 7.3 kg