

Shark Clamps, Half Clamps & Side Clamps

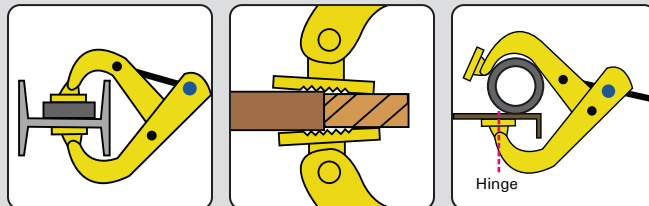
Precise scissor action clamps with the Quick Acting Buttons.

Shark Clamps

Patent No. US 6,983,012 B2



Shown with optional rubber pads. (P/N: SCP)



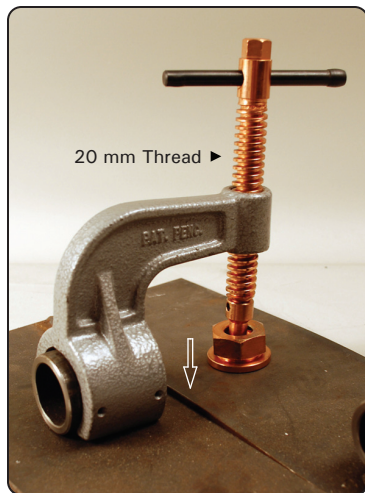
Step-Over Applications Uneven Thicknesses Clamp Round Parts

Fast Set-ups, just hold the button down and pull-push the handle to desired clamping position, release the button and turn the handle to tighten.

Part No.	Description	Pull Force	Opening	Weight
SC50	T-Handle	1,000 lbs 455 kg	5" 127 mm	2.2 lbs 1.0 kg
SC50A	Straight Handle	300 lbs 135 kg	5" 127 mm	2.0 lbs 0.9 kg
SC65	T-Handle	1,000 lbs 455 kg	6-1/2" 165 mm	2.5 lbs 1.1 kg
SC65A	Straight Handle	300 lbs 135 kg	6-1/2" 165 mm	2.2 lbs 1.0 kg

Half Clamps

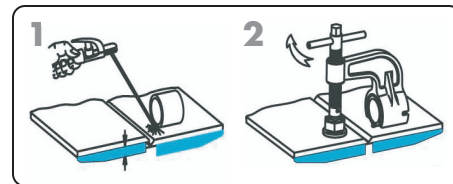
Patent No. US 6,983,525 B2



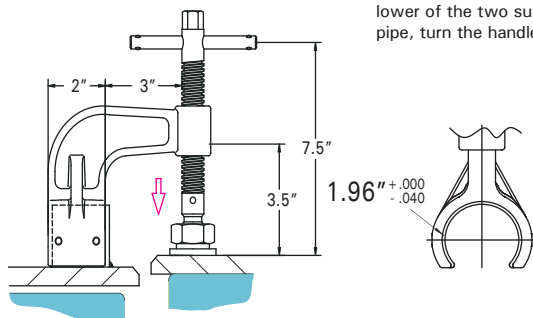
The Efficient, Safe Way to Align Materials.

- » The DOG & WEDGE and CUT-OFF C-CLAMP methods of material alignment are messy, time consuming, and unsafe!
- » Align materials in the fabrication of water tanks, bulkheads, deck sections, flat plates, etc.
- » For big jobs, tack weld additional 1-1/2" cut pipes along the joint.

How to Use



Tack weld the front side of 1-1/2" pipe coupon to the lower of the two surfaces. Slide Half Clamp onto the cut pipe, turn the handle until the misaligned materials align.

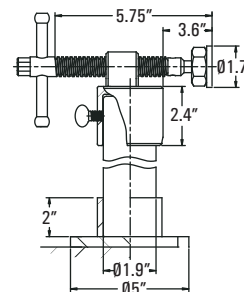


Copper Plated Acme Screw / Ductile Iron Body

Part No.	Weight
VHC15	3.7 lbs 1.7 kg

Side Clamps

Build push-action clamp to custom heights. Insert pipe (1-1/2" dia.) of desired length. Base can be bolt-mounted to the table.



Copper Plated Acme Screw / Ductile Iron Body

Part No.	Weight
VSC15	5.6 lbs 2.6 kg