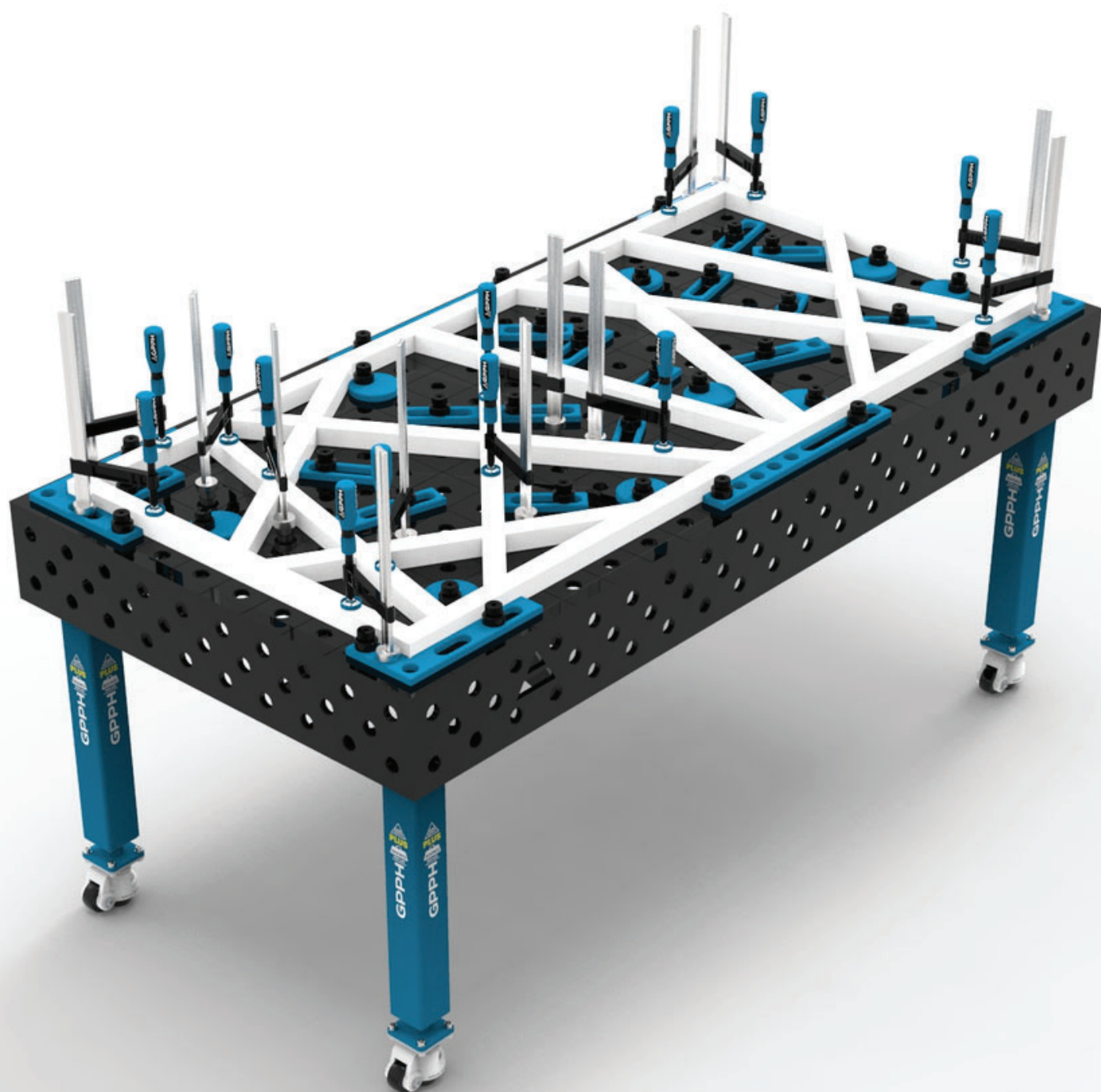
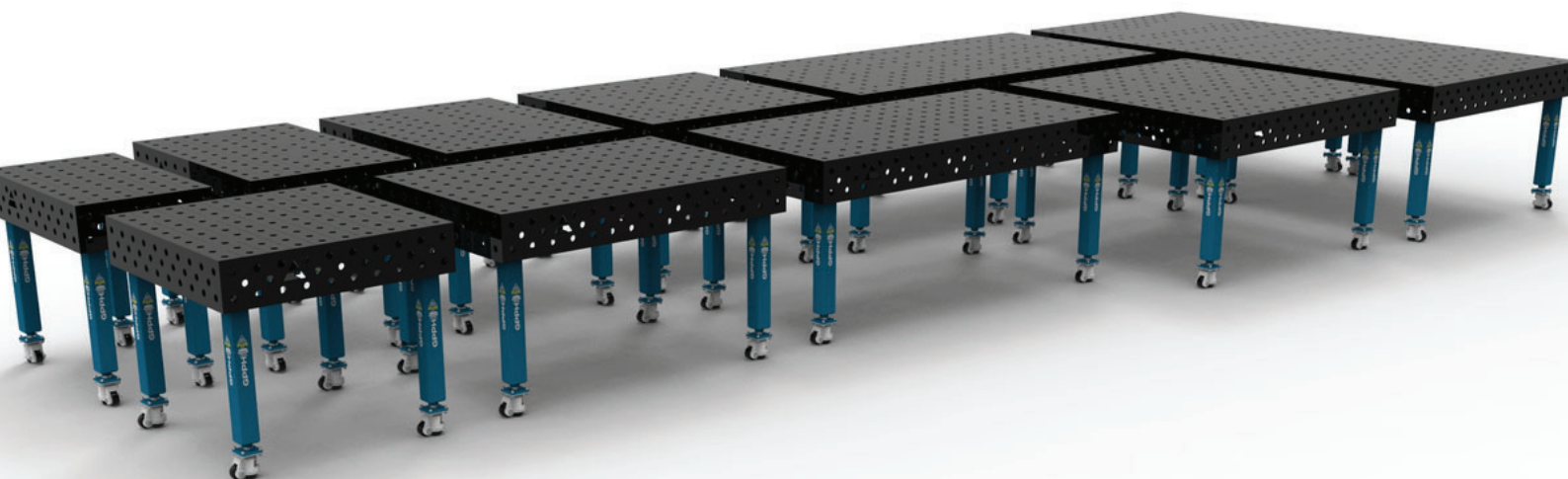


TRADITIONAL WELDING TABLES **PLUS**



TECHNICAL PARAMETERS

- ✓ StStable and massive construction
- ✓ The highest quality of workmanship
- ✓ Perfect flatness of the table [+ / - 0,5mm]
- ✓ Made of S355J2+N
- ✓ Holes of system $\varnothing 16$ in the grid 50x50mm or 100x100mm or holes of system $\varnothing 28$ in the grid 100x100mm
- ✓ Three grids of holes on the 4 sides
- ✓ Chamfered and milled holes for easy tool assembly
- ✓ Engraved scale in the grid 100x100mm
- ✓ Height adjustment of the table with standard legs approx. 880-930mm
- ✓ Possibility of using stainless steel covers
- ✓ Tables can be combined freely to extend a working surface
- ✓ All tables are reinforced with ribs
- ✓ Produced with standard ISO 2768-1
- ✓ Milled worktop edges
- Thickness **12mm**
- Table legs made of profile **80x80mm**
- Capacity: **500kg/leg***



*Applies to standard legs on the foot. When it comes to legs on wheels, it is the static load capacity - it refers to the situation where the table is supported on the feet protruding from the wheels.

DIMENSIONS OF TRADITIONAL WELDING TABLES^{PLUS}

GPPH TRDITIONAL WELDING TABLE^{PLUS} TWT.PLUS.300148



- length x width: 3000x1480mm
- side plate: 200mm
- table weight: approx. 780 kg
- capacity: 4 000 kg
- number of legs: 8

* The 3000x1480 GPPH welding table consists of two 1500x1480 GPPH welding tables connected to each other.

GPPH TRDITIONAL WELDING TABLE^{PLUS} TWT.PLUS.240120



- length x width: 2400x1200mm
- side plate: 200mm
- table weight: approx. 510 kg
- capacity: 3 000 kg
- number of legs: 6

DIMENSIONS OF TRADITIONAL WELDING TABLES^{PLUS}

GPPH TRDITIONAL WELDING TABLE^{PLUS} TWT.PLUS.200100



- length x width: 2000x1000mm
- side plate: 200mm
- table weight: approx. 370 kg
- capacity: 2 000 kg
- number of legs: 4

GPPH TRDITIONAL WELDING TABLE^{PLUS} TWT.PLUS.150148



- length x width: 1500x1480mm
- side plate: 200mm
- table weight: approx. 390 kg
- capacity: 2 000 kg
- number of legs: 4

DIMENSIONS OF TRADITIONAL WELDING TABLES^{PLUS}

GPPH TRDITIONAL WELDING TABLE^{PLUS} TWT.PLUS.150100



- length x width: 1500x1000mm
- side plate: 200mm
- table weight: approx. 300 kg
- capacity: 2 000 kg
- number of legs: 4

GPPH TRDITIONAL WELDING TABLE^{PLUS} TWT.PLUS.120120



- length x width: 1200x1200mm
- side plate: 200mm
- table weight: approx. 280 kg
- capacity: 2 000 kg
- number of legs: 4

DIMENSIONS OF TRADITIONAL WELDING TABLES^{PLUS}

GPPH TRDITIONAL WELDING TABLE^{PLUS} TWT.PLUS.120100



- length x width: 1200x1000mm
- side plate: 200mm
- table weight: approx. 260 kg
- capacity: 2 000 kg
- number of legs: 4

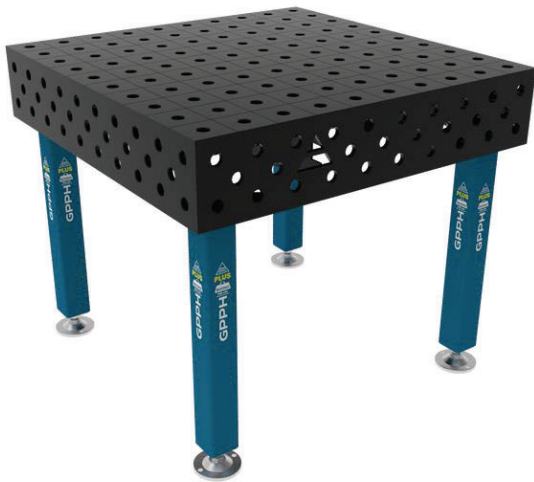
GPPH TRDITIONAL WELDING TABLE^{PLUS} TWT.PLUS.12080



- length x width: 1200x800mm
- side plate: 200mm
- table weight: approx. 220 kg
- capacity: 2 000 kg
- number of legs: 4

DIMENSIONS OF TRADITIONAL WELDING TABLES^{PLUS}

GPPH TRDITIONAL WELDING TABLE^{PLUS} TWT.PLUS.100100



- length x width: 1000x1000mm
- side plate: 200mm
- table weight: approx. 230 kg
- capacity: 2 000 kg
- number of legs: 4

GPPH TRDITIONAL WELDING TABLE^{PLUS} TWT.PLUS.10060



- length x width: 1000x600mm
- side plate: 200mm
- table weight: approx. 170 kg
- capacity: 2 000 kg
- number of legs: 4